

12V & 24V DIESEL TRANSFER PUMP UNIT



Applies to the following models **ONLY**:

12PA.CASE

24PA.CASE

12PA.BARE

24PA.BARE

Please read carefully **BEFORE** commencing installation.

Registered Office: HYTEK (GB) LIMITED,
Delta House, Green Street, Elsenham, Bishop's Stortford,
CM22 6DS UK.

Registered in England No. 1915382

Tel: +44 (0) 1279 815 600

Email: info@hytekgb.com

ENVIRONMENTAL INFORMATION



UK Regulation SI 2013 3113 require that the equipment bearing this symbol on the product and/or its packaging must not be disposed of with unsorted municipal waste. The symbol indicates that this product must be disposed of separately from regular household waste streams. It is your responsibility to dispose of this and other electric and electronic equipment via designated collection facilities appointed by the government or local authorities.

PRODUCT DESCRIPTION

This pump is designed to pump clean liquids such as diesel or gas oil in an outdoor environment using a 12 or 24 volt DC electrical supply.

SPECIFICATION

- Only suitable with diesel or biodiesel up to B30.
- Maximum flow rate: 40L/min.
- 3/4" BSPF ports.
- Direct drive vane pumping unit with bypass valve.
- Weatherproof to IP54 for outdoor use.
- 4m long battery cable & croc clips.
- Maximum run time 15 mins for 24V pumps, 30 mins for 12v pumps.

DUTY CYCLE WARNING:

THIS PUMP IS DESIGNED FOR INTERMITTENT USE. DO NOT RUN THIS PUMP CONTINUOUSLY FOR LONGER THAN 30 MINS FOR 12V PUMPS, 15 MINS FOR 24V PUMPS, AS IT MAY DAMAGE THE MOTOR AND VOID THE WARRANTY. ALLOW PUMP TO COOL FOR 15 MINS (24V) 30 MINS (12V) OR TO AMBIENT TEMP BEFORE RESUMING OPERATION.

DUTY CYCLE WILL VARY WITH LOAD AND AMBIENT TEMPERATURE.

BYPASS WARNING:

DO NOT ALLOW THIS PUMP TO RUN ON BYPASS (NOZZLE CLOSED) FOR PERIODS LONGER THAN 1 MINUTE. FAILING TO DO THIS MAY DAMAGE THE PUMP UNIT AND VOID WARRANTY.

IMPORTANT WARNING NOTES

1. This dispenser **MUST NOT** be used to dispense petrol or other flammable liquids with a flash point below 55°C.
2. It must not be sited adjacent to a petrol dispenser or any other hazardous zone.
3. A strainer/filter must be used on the pump inlet to ensure that no debris enters into the pump chamber.
4. Installation of this equipment and its associated tank, pipe work and fittings should only be carried out by qualified fuel installation engineers.
5. The installation must conform to all relevant electrical and local authority regulations and standards.
6. Do not run the pump dry.
7. Do not run the pump for longer than 1 minute on bypass. (Nozzle closed)
8. Do not use this product if it is leaking or damaged.
9. Do not run this pump for longer than the recommended duty cycle.
10. Do not run this pump if it becomes hot to the touch.
11. Do not use this pump in an enclosed environment or without adequate ventilation.

OPERATION

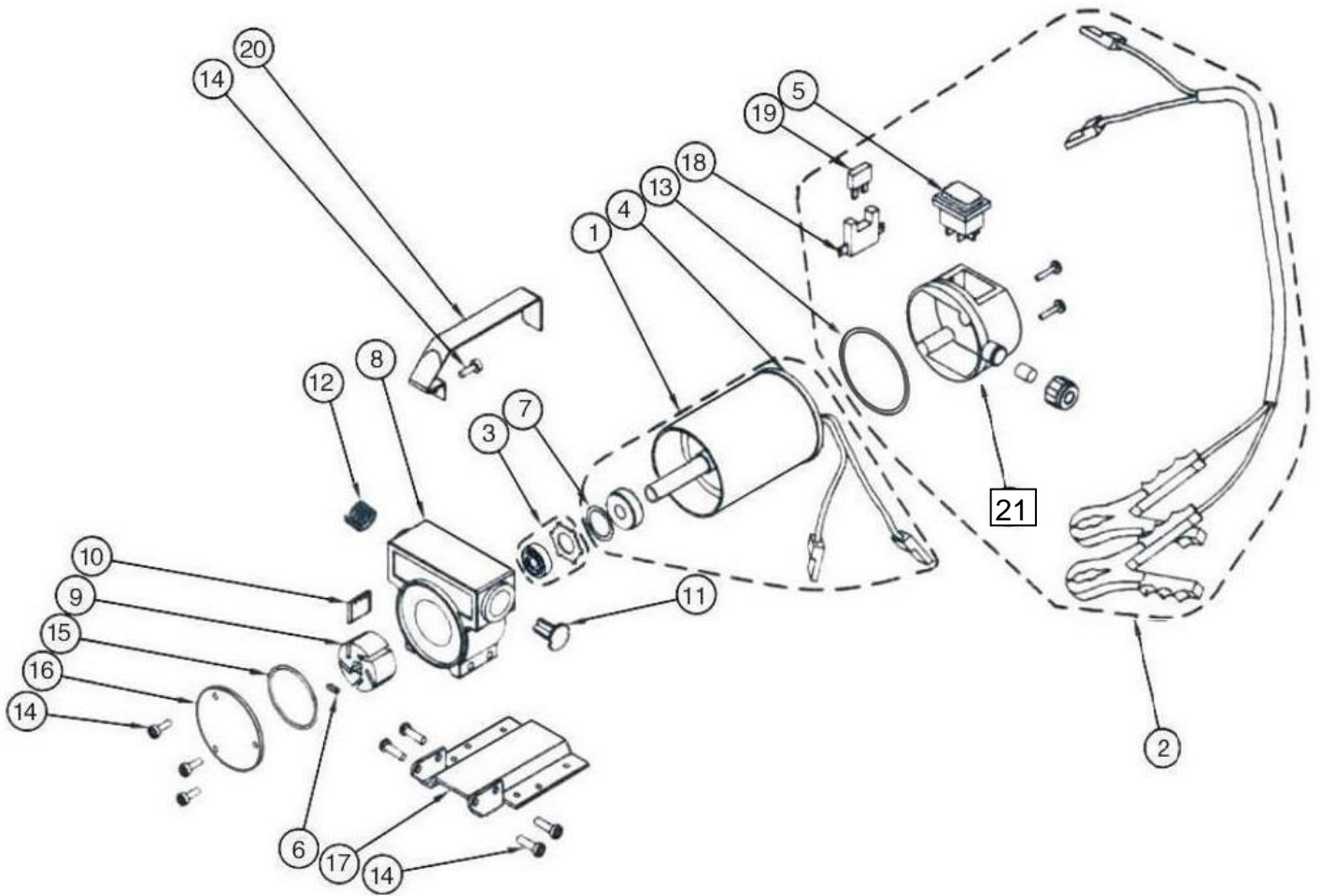
1. Ensure the pump is filled with fuel and fully primed.
2. Connect the pump crocodile clips to a suitable 12 or 24-volt DC power supply as follows:

Red Crocodile Clip:	Positive (+)
Black Crocodile Clip:	Negative (-)

3. Fully immerse the end of the suction hose in the fuel to be pumped and place the fuel delivery nozzle in the tank / container to be filled.
4. Switch on pump and dispense fuel.
5. Switch off pump when delivery is complete.
6. After fuelling ensure that the delivery hose is stowed correctly to prevent it being run over by a vehicle.

COMPONENTS/SPARE PARTS

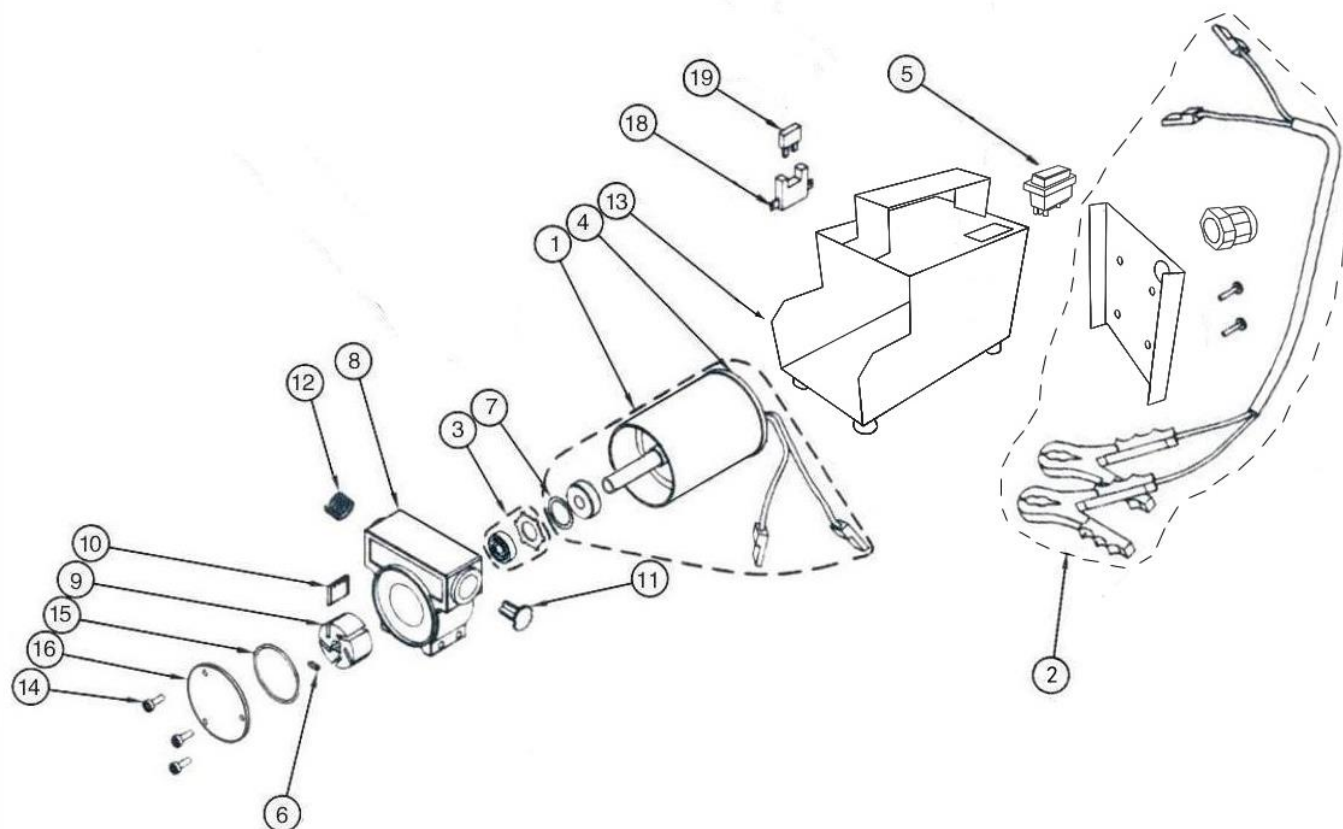
BARE PUMP – NO RED CASE (12V & 24V)



STOCK CODE	DESCRIPTION	DIAGRAM No.	QUANTITY PER PUMP
12PA.1	ROTOR	9	1
12PA.2	VANES	10	5
12PA.4	ON/OFF SWITCH	5	1
12PA.5	ROTOR PLATE	16	1
12PA.6	ROTOR PLATE O-RING	15	1
12PA.7	ROTOR KEY	6	1
12PA.9	POWER LEAD & CROC CLIPS	2	1
12PA.10	SHAFT SEAL	3	1
12PA.11	JUNCTION BOX (NO SWITCH)	21	1
12PA.FUSE	30A BLADE FUSE	19	1
12PA.CABLE	CABLE FOR EXTENDING POWER LEAD	N/A	N/A

All other parts shown available on request.

RED CASED PUMP (12V & 24V)



STOCK CODE	DESCRIPTION	DIAGRAM No.	QUANTITY PER PUMP
12PA.1	ROTOR	9	1
12PA.2	VANES	10	5
12PA.3	ON/OFF SWITCH	5	1
12PA.5	ROTOR PLATE	16	1
12PA.6	ROTOR PLATE O-RING	15	1
12PA.7	ROTOR KEY	6	1
12PA.8	RED PUMP CASING	13	1
12PA.9	POWER LEAD & CROC CLIPS	2	1
12PA.10	SHAFT SEAL	3	1
12PA.FUSE	30A BLADE FUSE	19	1
12PA.CABLE	CABLE FOR EXTENDING POWER LEAD	N/A	N/A

All other parts shown available on request.

DECLARATION OF CONFORMITY



Date of First Issue: 12th January 2007
Date of Current Issue: 21st March 2014

Equipment Details: 12PA and 24PA Ranges of Diesel Transfer Pumps 12 or 24 Volt DC Operated

Applicable Standards: EMC
EN61000-6-3:2001 (+A11) Emissions
2006/95/EC Electrical Equipment (Low Voltage)
Machinery Directive 2006/42/EC
The Pressure Equipment Regulations 1999 S.I. 1999/2001
Entry Into Force:- 29 November 1999
Amended to S.I. 2002/1267
Pressure Equipment Directive 97/23/EC
Waste Electrical and Electronic Equipment Regulations 2006
2002/96/EC 2003/108/EC
2011/65/EU RoHS Directive

Certificate Numbers: RoHS test report number
And Details NB2010060601S2
By Product Technology Service
(Ningbo) Co.
6&7F, 59, Huayu Road,
Yinzhou District, Ningbo 315192
P.R. China

Authorized By: Clive Wellings
Technical Manager Hytek

Declaration Number: EC044

THE INFORMATION CONTAINED IN THIS DOCUMENT IS PROTECTED BY COPYRIGHT © AND PROPERTY LAWS AND IS THE SOLE PROPERTY OF HYTEK (GB) LTD. ANY REPRODUCTION IN PART OR AS A WHOLE WITHOUT THE WRITTEN PERMISSION OF HYTEK (GB) LTD IS PROHIBITED.