

Polylok 4" Seals and Nuts

INSTALLATION GUIDE (Uncut and Precut Boxes)

DISTRIBUTION BOXES WITH UNCUT HOLES

Tools needed: A blade no wider than 1/2" and grease or lubricant for the blade. Follow steps 1-3 below.



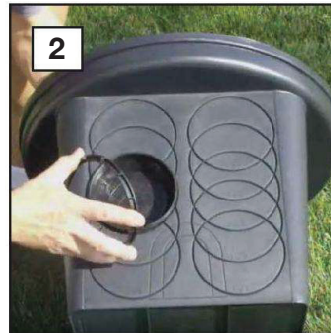
4 Hole D-Box
SKU: 3017



7 Hole Uncut
SKU: 3017-207



1. Lubricate your blade and cut along the angle of the cut guides.



2. Insert seal from inside the box, and tighten the nut from the outside.



3. Tighten firmly so that the nut and seal do not move.



Search YouTube - Type in 'Polylok D-Box Seal'

DISTRIBUTION/DRAINAGE BOXES WITH PRECUT HOLES

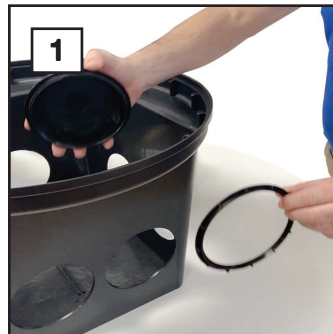
No tools required. All boxes include grates or covers. Follow steps 1-3 below. (**Note:** Boxes may arrive with seals pre-installed.)



Drainage Box
PDB-12KIT(BLACK)



7 Hole PRE-CUT
3017-207-C



1. Insert seal from inside the box.



2. Tighten the nut from the outside.



3. Tighten firmly so that the nut and seal do not move.

Pulling the 2", 3' or 4" Pipe hole tabs from the installed seals



4" Seal and Nut
3001-SN



1. To release the pull tabs, use a key or screwdriver to start the pull tab for the correct pipe size.
(PULL OUT - DO NOT CUT OUT!)



2. Once you have started the tear, use your fingers to pull out the rest of the tab until the hole is complete.



3. You are now ready to insert the correct size pipe by pushing it through the flexible D-Box seal.