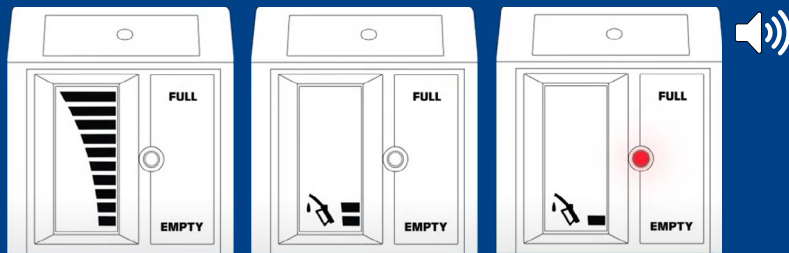


# WATCHMAN<sup>®</sup> Sonic Advanced

What do your screen notifications mean?



Householders'  
Document to  
Keep



Full

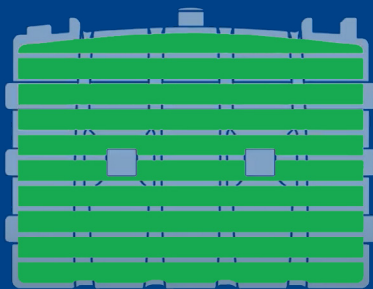
Low Level (Early Warning)

Low Level (Almost Empty)



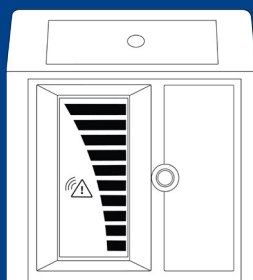
## Level Indication

Note: it can take up to 24h for the first reading to be displayed.



## Level Meaning

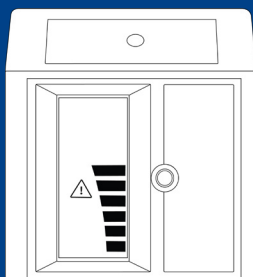
Each bar represents 10% of the fluid height in the inner tank (not volume). Levels will not change until sufficient fuel has been used to drop to the next 10% of the inner tank.



Constant flashing warning triangle.

## Low Battery Notification

If a unit is still under warranty and is clearly showing low battery symbol, please contact us. Units under warranty SHOULD NOT BE OPENED. Warranty will be void if unit is opened within the warranty period. If the unit is out of warranty, we recommend installing Varta CR2430 battery.



Last good level and constant triangle.

## No Echo Notification

Please enable Dip Switch 2 and rematch transmitter with receiver (or allow 24hrs to show accurate readings). If this does not change within a few days, check possible reasons below:

- Slimline/narrow tanks (enabling Dip Switch 2)
- Overfilled tank (wait until level drops in tank)
- Empty tank (no liquid in tank)
- Transmitter installation (check the unit is levelled and correctly positioned from a tank wall, corrugation or window, minimum 15cm from any obstructions).

E: [sensor@kingspan.com](mailto:sensor@kingspan.com)  
T: +44 (0) 28 3836 4415  
[www.kingspan.com](http://www.kingspan.com)



# WATCHMAN<sup>®</sup> Sonic Advanced

## What do your screen notifications mean?



Flashing warning triangle, no level.

### No Transmission Heard Notification

Please re-site the receiver in a location where the transmission is heard. Rematch the receiver and transmitter.



Siren type sound, flashing LED and level bars appears in sequence.

### Sudden Drop Notification

This functionality can be enabled/disabled by Dip Switch 1. It might take up to 24h to update the settings. Rate: Above 1.5cm per hour, may take up to 30 mins to detect.

### Watch FAQs video:



Kingspan Watchman Sonic Advanced System - FAQs Guide | Screen Notifications

#### No Echo Notification

Please ensure Dip Switch 2. Please allow 48hrs to show accurate readings.

Part No. 1757904 or lower | Part No. 1757905 or higher

No Echo Notification may appear due to temperature change, however the level displayed may be correct.

Please wait as if this does not change within a few days, check possible reasons shown next.

Warning triangle constantly flashing and Bar 5 displayed. | Last good level and constant triangle.

No Echo Notification does not indicate a fault with the product. It is informative only.

[energy.kwe.kingspan.com/faqs](http://energy.kwe.kingspan.com/faqs)

### Watch our Installation Video:



Step-by-Step Guide to Installing the Kingspan Watchman Sonic Advanced | Pairing Transmitter

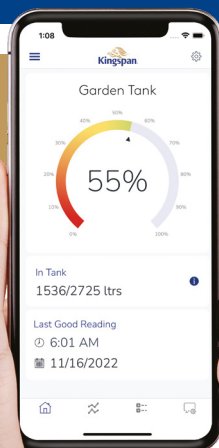
Hold the white dot on the transmitter beside the black dot on the receiver.

[energy.kwe.kingspan.com/install](http://energy.kwe.kingspan.com/install)

### Upgrade to access Watchman SENSiT smart features

Purchase the Watchman SENSiT USB Receiver to monitor your oil levels remotely and get notifications directly to your phone via Kingspan Connect app.

[energy.kwe.kingspan.com/receiver](http://energy.kwe.kingspan.com/receiver)



E: [sensor@kingspan.com](mailto:sensor@kingspan.com)  
T: +44 (0) 28 3836 4415  
[www.kingspan.com](http://www.kingspan.com)