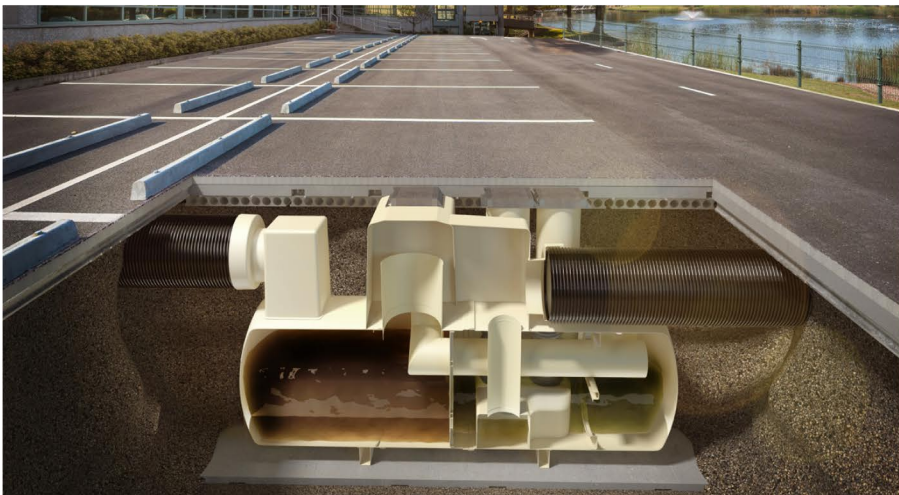
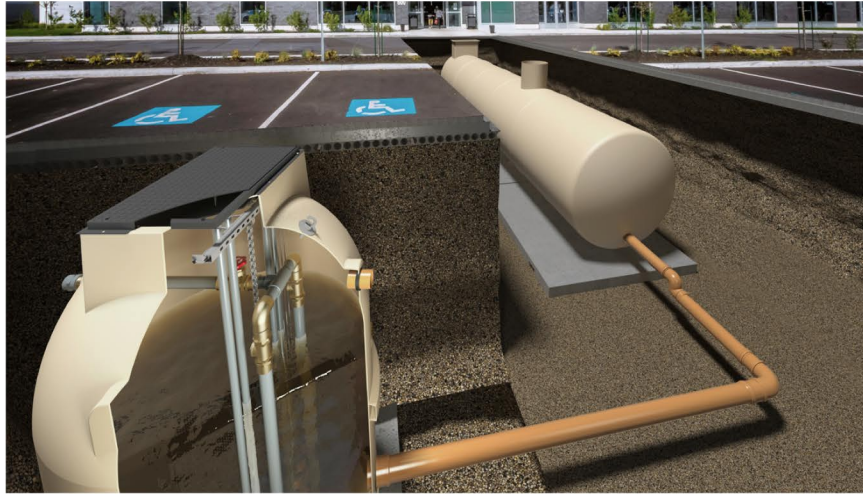




# AquaCore<sup>®</sup> Sustainable Drainage Systems

Reliable and trusted surface water management solutions



# A fully supported SuDS treatment solution



Water is a precious resource. We must manage it responsibly. In order for your SuDS system to be eligible for adoption, you must align it to the Design and Construction Guidance\*, from Sewerage Sector Guidance (appendix C) and CIRIA C753 The SuDS Manual.

\*This guidance is for England only.  
For Scotland refer to 'Sewers for Scotland'.  
For Wales refer to 'Statutory SuDS Standards Wales'.

Kingspan Klargester have been pioneers in this field for decades, with 65 years experience in manufacturing innovative ways to treat, store and manage the flow of water.

We can design and build a full SuDS solution tailored to your exact needs. Our AquaCore® solutions are reliable and trusted and come with Kingspan's expert service, maintenance and smart monitoring package for your complete peace of mind.

Our UK based factory fitted solutions may reduce on-site time and cost, compared with other SuDS offerings in the market. With expertly designed individual components for each part of the SuDS management train, we can help you with any scale of commercial project.

Talk to our expert team today at [klargest@kingspan.com](mailto:klargest@kingspan.com)

# AquaCore<sup>®</sup> trusted SuDS solutions from the experts in Water Management

Our aim is to future-proof your SuDS solution in line with the Design and Construction Guidance, from Sewerage Sector Guidance (appendix C) and CIRIA C753 The SuDS Manual, whilst offering the following benefits:

- Trusted solution from manufacturers with 65 years' industry experience
- UK factory fitted solutions which reduce on site time and cost
- Easy access for maintenance across all SuDS elements
- A fully managed solution including service and monitoring via Smart Serv Pro remote software (optional extra)

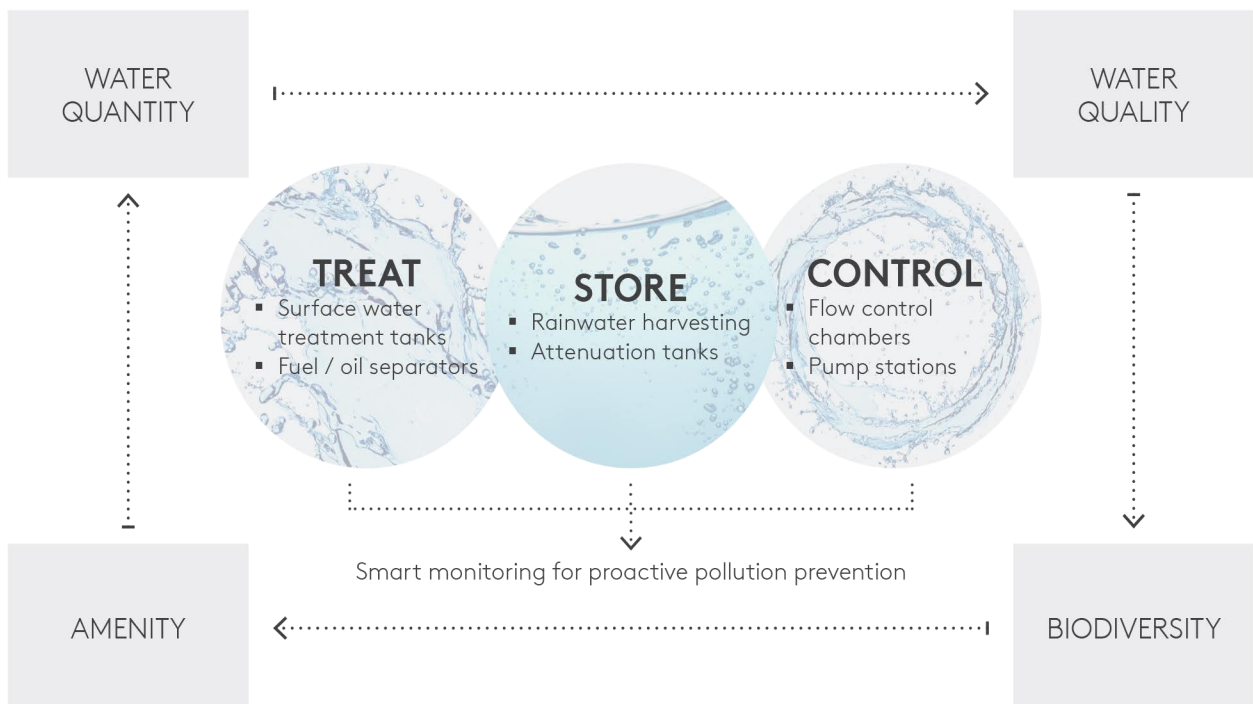
Find out more about our service and monitoring packages for SuDS, including our Smart Serv Pro remote monitoring solution

E: [FMservices@kingspan.com](mailto:FMservices@kingspan.com)  
T: 0333 240 6868



Contact your local Klargester team today to discuss your project

E: [klargester@kingspan.com](mailto:klargester@kingspan.com) | T: 01296 633033

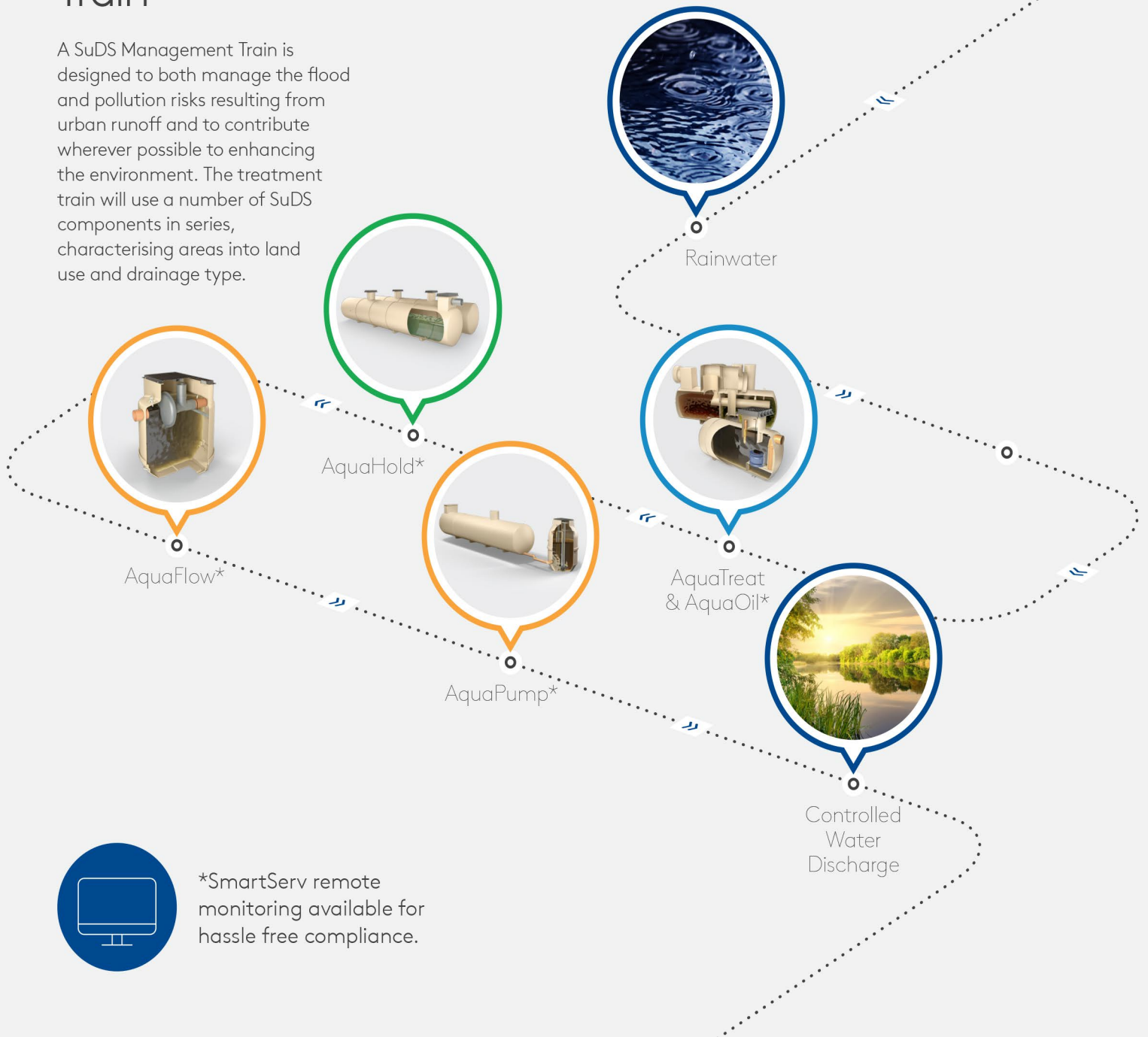


# Supporting your SuDS Management Train

The twin forces of climate change and urbanisation have brought about a dramatic rethink in our approach to water management, including water quality, water quantity and biodiversity and amenities.

## SuDS Management Train

A SuDS Management Train is designed to both manage the flood and pollution risks resulting from urban runoff and to contribute wherever possible to enhancing the environment. The treatment train will use a number of SuDS components in series, characterising areas into land use and drainage type.



# Treat, Store and Control

Kingspan Klargester's AquaCore® range is suitable for multiple applications, on and off-mains.



● TREAT

● STORE

● CONTROL



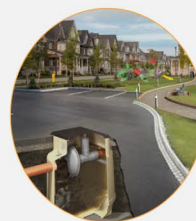
**AquaTreat**  
Full Retention  
GRP Surface  
Water Treatment  
Separators



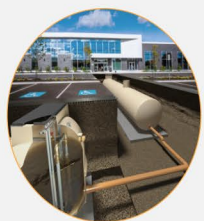
**AquaOil**  
AquaOil full  
retention MDPE  
and GRP  
separators/  
bypass MDPE  
and GRP separators



**AquaHold**  
Master and  
Storage Tanks



**AquaFlow**  
SF Horizontal  
Flow Control  
and FC Vertical  
Flow Control  
solutions



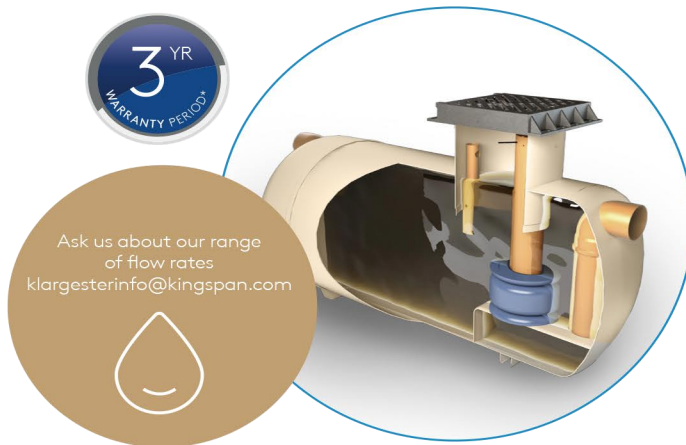
**AquaPump**  
PU vertical  
and PC  
horizontal  
range

# AquaTreat

For more information including technical specifications, scan here



The Klargester AquaTreat Full Retention GRP Surface Water Treatment Separators range helps to reduce pollution in line with SuDS Mitigation Indices by removing metals, suspended solids and hydrocarbons from surface water.



## AquaTreat

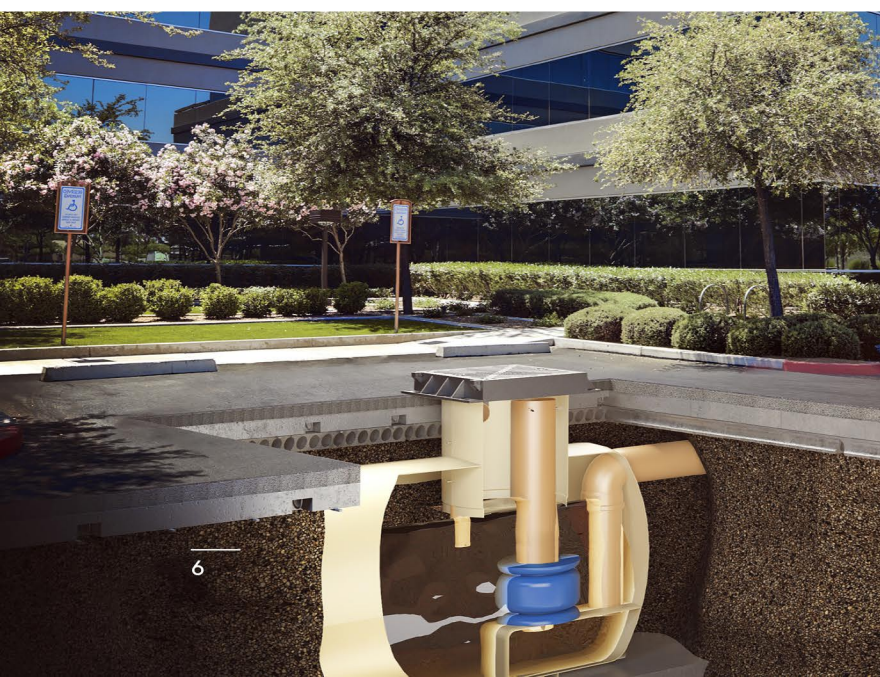
Full Retention GRP Surface Water Treatment Separators range

Our surface water treatment range is suitable for a wide range of SuDS schemes such as industrial estates, permitted sites and roadways.

### Benefits

- Light and easy to install
- Easier servicing, with maintenance from ground level
- Vent points within necks
- SmartServ Pro remote monitoring available (as optional extra)
- Inclusive of silt storage
- Auto closure device included
- Deep inverts available for 2.6 diameter units

\*View terms online at <https://www.kingspan.com/gb/en-gb/products/wastewater-management/warranty-terms>



3 year warranty when registered online and must be serviced by a Kingspan engineer or accredited service partner. Other terms and conditions apply\*



Scan the QR code to register your warranty



Ask us about our Smart Commissioning package - [FMservices@kingspan.com](mailto:FMservices@kingspan.com)

Treat

Store

Control

# AquaOil

For more information including technical specifications, scan here



3 year warranty when registered online and must be serviced by a Kingspan engineer or accredited service partner. Other terms and conditions apply\*



Scan the QR code to register your warranty

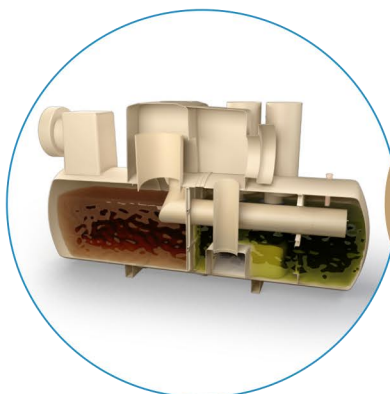



Ask us about our Smart Commissioning package - [FMservices@kingspan.com](mailto:FMservices@kingspan.com)

AquaOil full retention MDPE and GRP separators/bypass MDPE and GRP separators are classified as effective spill containment systems that meets the EN 858-1 Class I effluent targets at low flow rates.

## Benefits

- GRP and rotomoulded models available
- Easier to service, with maintenance from ground level
- Inclusive of silt storage volume
- Fitted inlet and outlet connectors
- SmartServ Pro remote monitoring solution available (as optional extra)
- Vent points within necks
- Deep inverts available for 2.6 diameter units



  
**170 – 69,444m<sup>2</sup>**  
 Available for flow rates up to 285 litres per second.



## AquaOil

Full retention MDPE and GRP separators/  
bypass MDPE and GRP separators

\*View terms online at <https://www.kingspan.com/gb/en-gb/products/wastewater-management/warranty-terms>

Treat

Store

Control

# AquaHold

For more information including technical specifications, scan here



The AquaHold range of Master and Storage Tanks prevent a build up of silt and other debris, whilst allowing access for regular maintenance.





3 year warranty when registered online and must be serviced by a Kingspan engineer or accredited service partner. Other terms and conditions apply\*



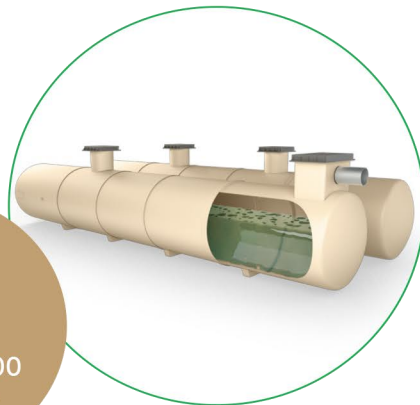
Scan the QR code to register your warranty



Ask us about our Smart Commissioning package - [FMservices@kingspan.com](mailto:FMservices@kingspan.com)

Klargester AquaHold tanks store increased runoff rates due to new developments and excess flows from storm events. Attenuation serves as a way to help mimic natural runoff rates that have been altered through developing sites.

The Klargester AquaHold range is available from 5,000–79,000 litres in a single tank installation, or larger modular solutions. Ask our team for details.



5,000 – 79,000  
Litres Capacity

**AquaHold**  
Master and Storage Tanks

#### Benefits

- Simple, robust solution
- Built from durable GRP material
- Suitable for small or large applications
- Easier to service
- Single or multiple tank installations available
- Full technical and servicing support available

\*View terms online at <https://www.kingspan.com/gb/en-gb/products/wastewater-management/warranty-terms>

Treat

Store

Control

# AquaFlow

For more information including technical specifications, scan here

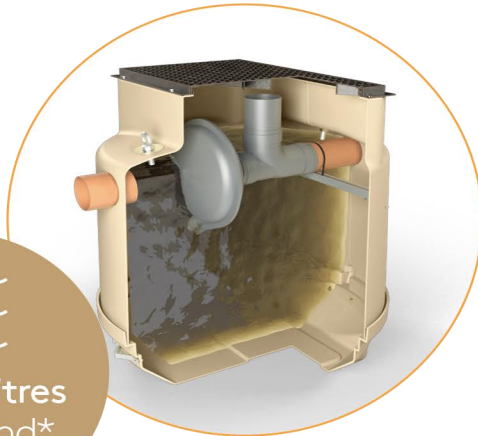


The Klargester AquaFlow SF Horizontal Flow Control and FC Vertical Flow Control solutions are offered in 3 different chamber model sizes, with a standard range of 0.5 l/s – 80 l/s available. Greater capacities available on request.

Our AquaFlow devices control the runoff rate entering a receiving watercourse/network. Limiting flow rates help avoid flooding and damage to natural habitats downstream and receiving watercourse. We offer overflow or surface operated bypass options, with full technical support available for your project.

## Benefits

- Full range available in 1.2, 1.8 and 2.6 model sizes
- Robust GRP constructed chambers
- Flexibility with variable inlet connection sizes available
- Large chamber to facilitate ladder access in emergency situations
- Standalone product, compatible with crate systems
- Full technical and servicing support available



0.5 – 80 litres per second\*

\*Flow rates

## AquaFlow

SF Horizontal Flow Control and FC Vertical Flow Control solutions

\*View terms online at <https://www.kingspan.com/gb/en-gb/products/wastewater-management/warranty-terms>



3 year warranty when registered online and must be serviced by a Kingspan engineer or accredited service partner. Other terms and conditions apply\*



Scan the QR code to register your warranty



Ask us about our Smart Commissioning package - [FMservices@kingspan.com](mailto:FMservices@kingspan.com)

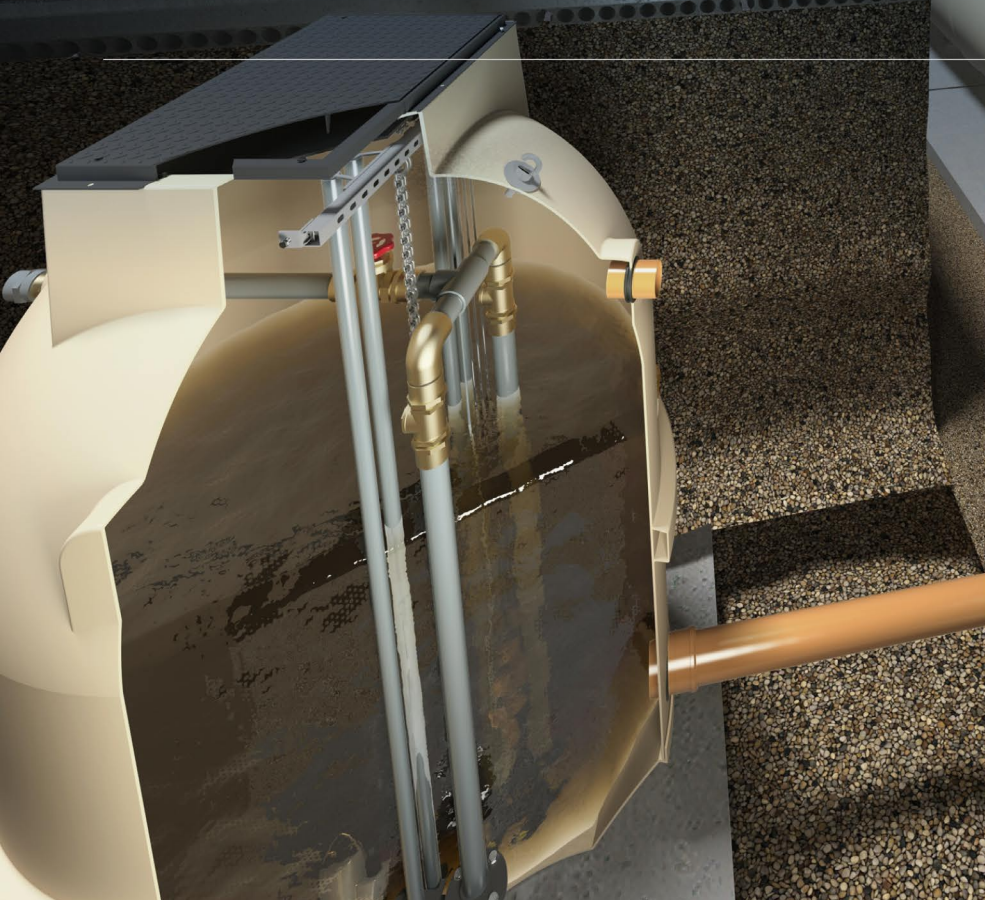
Treat

Store

Control

# AquaPump

For more information including technical specifications, scan here



3 year warranty when registered online and must be serviced by a Kingspan engineer or accredited service partner. Other terms and conditions apply\*



Scan the QR code to register your warranty



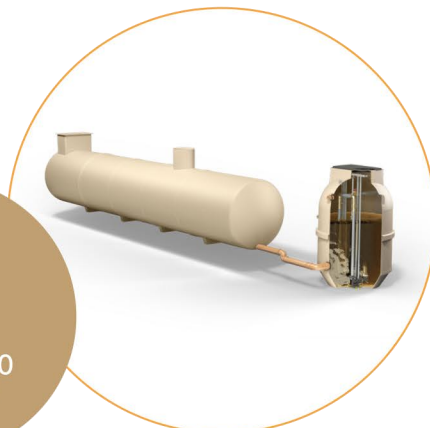
Ask us about our Smart Commissioning package - [FMservices@kingspan.com](mailto:FMservices@kingspan.com)

AquaPump PU vertical and PC horizontal range is for use when more than gravity is needed to control the release of water on an application.

With full technical support offered to ensure a bespoke pumping solution, our pump discharge ranges up to 70 litres per second.

### Benefits

- Full range available in 0.6, 0.9, 1.0, 1.2, 1.8 & 2.6 model sizes
- Robust GRP constructed chambers
- Bespoke designs to suit difficult site layouts
- Chambers up to 4.5m deep, available as standard
- Discharge rates of 1 – 70 l/s with a variety of pump types
- Variable inlet connection sizes and orientations available
- Full technical and servicing support available



200 - 79000  
Litres Capacity

**AquaPump**  
PU vertical and  
PC horizontal range

# Contact Details

---

## Ireland

**Kingspan Water & Energy Ltd.**

Unit 1a | Derryboy Road

Carnbane Business Park

Newry | BT35 6QH

T: NI: +44 (0)28 3026 6799

ROI: 0818 544 500

E: [klargestinfo@kingspan.com](mailto:klargestinfo@kingspan.com)

[www.kingspan.ie/klargest](http://www.kingspan.ie/klargest)

We take every care to ensure that the information in this document is accurate at the point of publication. Dimensions may vary within a small parameter due to manufacturing process variations or environmental conditions. All images are for illustration purposes only and, along with dimensions, should not be taken as binding. The actual product may vary and aspects such as equipment specification/ colour may differ.

To ensure you are viewing the most recent and accurate product information, please visit this link:

<https://www.kingspan.com/gb/en-gb/products/water-management/kingspan-klargest-aquacore>

©Kingspan and the Lion Device are Registered Trademarks of the Kingspan Group in the UK, Ireland and other countries.

All rights reserved. Registered in Country No. NI017631. Registered Office:

180 Gilford Road, Portadown, Co. Armagh, BT635LF. VAT GB412 5124 03

