

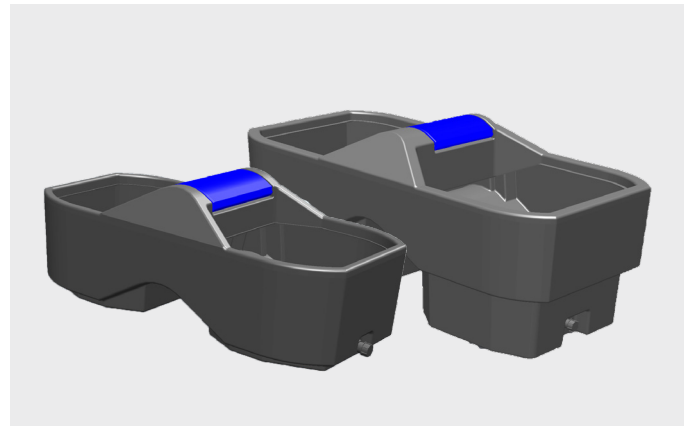
Energy Management Solutions

Protected By



Agricultural Range

Explore the full range of Kingspan Agricultural Solutions



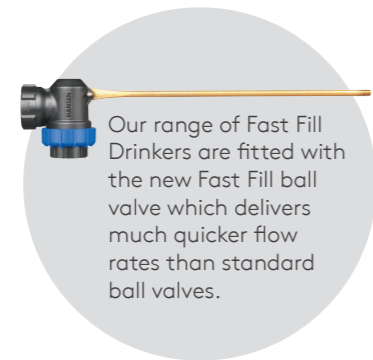
kingspan.com



Cattle Drinkers

Available in 1 - 400 gallons

The Kingspan range of tough cattle drinkers represents the best products of their kind available in the market. Simple and economical, these cattle drinkers come in a wide variety of sizes.



Our range of Fast Fill Drinkers are fitted with the new Fast Fill ball valve which delivers much quicker flow rates than standard ball valves.

Features

- Rotationally moulded from top quality medium density polyethylene.
- Ultraviolet stabilised for protection against sunlight.
- Extremely durable.
- Excellent impact strength, lightweight and easily transported.

Cattle Drinkers



12G DRINKER AD01

Capacity*	58 Ltrs
Length	680 mm
Width	440 mm
Height	353 mm



30G DRINKER AD02

Capacity*	126 Ltrs
Length	1225 mm
Width	535 mm
Height	465 mm



40G DRINKER AD27

Capacity*	182 Ltrs
Length	1280 mm
Width	475 mm
Height	570 mm



90G DRINKER AD03

Capacity*	353 Ltrs
Length	1400 mm
Width	610 mm
Height	620 mm



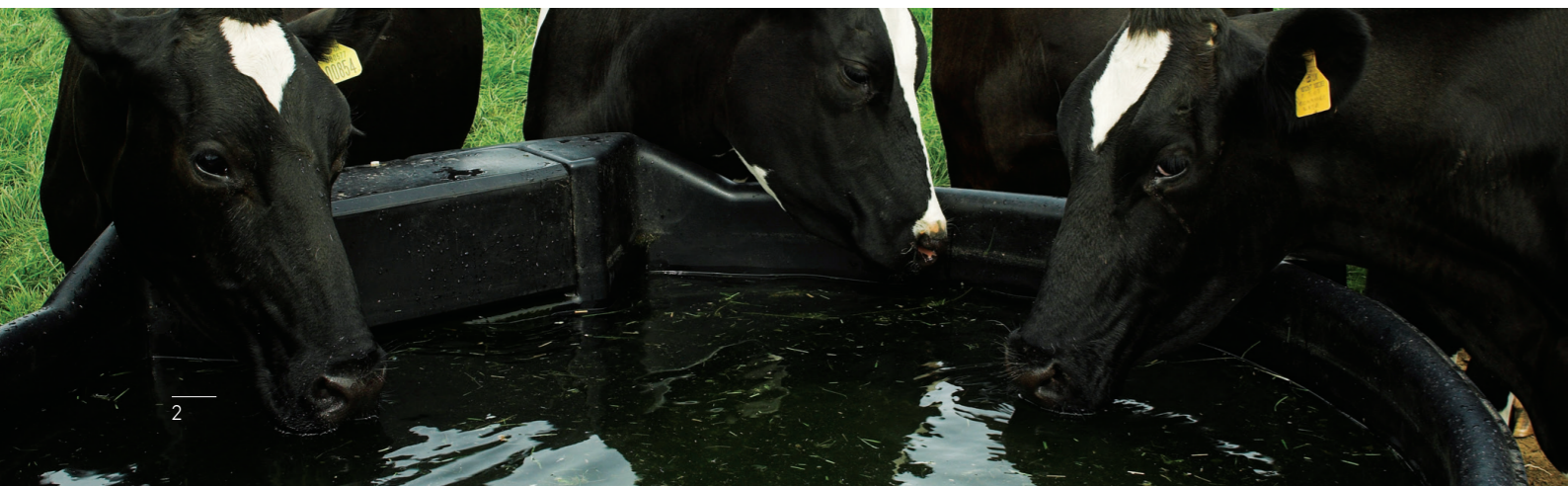
MEAL BIN AD83

Capacity*	1000 Ltrs
Length	1375 mm
Width	1200 mm
Height	920 mm

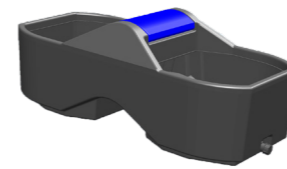


SHEEP DIP TUB AD15

Capacity*	1136 Ltrs
Length	2735 mm
Width	950 mm
Height	1225 mm

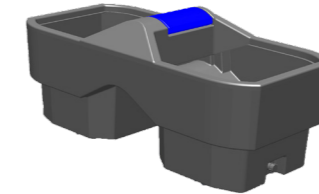


Fast Fill Drinkers



30GAL DRINKER AD122

Capacity*	136 Ltrs
	30 Gals
Length	1210 mm
Width	555 mm
Height	460 mm
Sludge Outlet	1" drain outlet



90GAL DRINKER AD123

Capacity*	409 Ltrs
	90 Gals
Length	1555 mm
Width	735 mm
Height	650 mm
Sludge Outlet	1" drain outlet



120GAL DRINKER AD92

Capacity*	545 Ltrs
	120 Gals
Length	2200 mm
Width	800 mm
Height	560 mm
Sludge Outlet	1 1/2" (x 2)



170GAL DRINKER AD93

Capacity*	770 Ltrs
	170 Gals
Diameter	1575 mm
Height	660 mm
Sludge Outlet	1 1/2"



250GAL DRINKER AD94

Capacity*	1136 Ltrs
	250 Gals
Diameter	1720 mm
Height	860 mm
Sludge Outlet	1 1/2"



400GAL DRINKER AD95

Capacity*	1800 Ltrs
	400 Gals
Diameter	2060 mm
Height	810 mm
Sludge Outlet	1 1/2"

Livestock Drinkers

Strong Rotomoulded PE Water drinkers to suit all Livestock requirements. All drinkers come complete with float and valve.



DRINKER

Capacity*	4 Ltrs
Length	325 mm
Width	270mm
Depth	260 mm



DRINKER

Capacity*	23 Ltrs
Length	370 mm
Width	420 mm
Depth	380 mm

*capacities may vary

Animal Feeders


Available in various sizes.



Milk Feeders

- Designed as a milk delivery system for 1 to 5 calves (fitted with peach teats)
- Available in black & white (1MF)
- Available in grey, orange & white (3MF/5MF)
- Separate compartments reduce risk of cross-contamination
- Easily cleaned/increased hygiene
- Each compartment holds approx. 2.5 litres (3MF/5MF)

Heavy duty polyethylene milk feeders designed to suit calves and lambs. All feeders are designed to secure over gate or rail.

		
1MF	3MF	5MF
Length 290 mm Width 230 mm Height 310 mm	Length 530 mm Width 260 mm Height 260 mm	Length 950 mm Width 260 mm Height 260 mm

30 Teat Milk Feeder

- Round feeder for easy moving for one person and comfortable feeding for calves
- Fitted with pull through calf peach teats
- Easy filled through 18" lid (twist lock lid fits securely)
- Easy washed through 2" bung
- Polyethylene tank that sits on a galvanised frame
- Holds approx 90 litres



Tank Diameter 1220 mm
Height 800 mm

Ad-Lib Gate Feeder

- Moulded from semi-translucent polyethylene for easy monitoring of food levels
- Fitted with a weather/bird guard so that it can be used both indoors and out
- Plastic brackets allow secure fastening to gate or rails
- Holds approx. 50kg of meal/pellets



Length 880 mm
Width 430 mm
Height 645 mm

Lamb Creep Feeder

- Fifteen lamb feeding spaces
- Safe feed gate to allow easy lamb exit
- Prevent ewe access and is simply clamped open to allow weaned lamb finishing
- Hygienic and strong



Tank Diameter 1200 mm
Height 850 mm

*These products are coming soon to our agricultural range

Molasses Feeder, Footbaths & Meal/Wood Pellet Bins

Meal/Wood Pellet Bins

- Moulded from heavy duty polyethylene
- Galvanised frame with a Butterfly flap valve to release meal/pellets
- Suitable for both indoor and outdoor use, it is also weather-proof, rodent proof and lockable
- The telescopic legs have three different height settings, making it easy to fill a wheel barrow, bucket or bag
- Only to be placed on solid and level ground.
- Designed to be moved by pallet forks; however a bale lifter attachment is also available



Length 1280 mm
Width 1280 mm
Height 2130 mm
Approx Weight 146kg



Liquid/Molasses Feeder

- Manufactured to a high quality finish in heavy duty polyethylene for maximum durability
- The screw on lid ensures a secure seal to the feeder and allows for easy top filling for all types of liquid feeds
- The rotating wheels are designed to allow free access feeding with controlled consumption
- The holding capacity is approximately 50 litres



Diameter 650 mm
Height 300 mm

Floor Trough

- Heavy duty polyethylene material ensures a robust hygienic product but allows for easy manoeuvrability
- Available in 4ft and 6ft



6FT	Length 1828 mm Width 710 mm Height 300 mm
4FT	Length 1480 mm Width 710 mm Height 300 mm

Footbaths

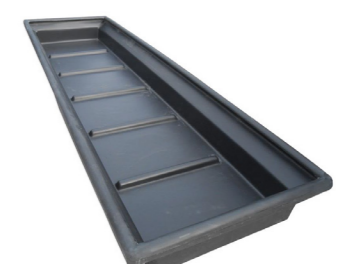
- Moulded splash guard to retain liquid
- Narrow base to economise on amount of foot dip needed
- Ridges on the bottom to avoid slipping
- Anti-slip rubber matting to provide livestock comfort (5ft only)
- Manufactured from heavy duty polyethylene for strength and durability



SHEEP FOOTBATH (5FT)
Length 1500 mm
Width 535 mm
Height 180 mm



SHEEP FOOTBATH (8FT)
Length 2400 mm
Width 460 mm
Height 210 mm



CATTLE FOOTBATH (8FT)
Length 2400 mm
Width 700 mm
Height 240 mm

TruckMaster®

Portable Diesel Storage & Dispensing Solutions
Available from 200-900 Litres

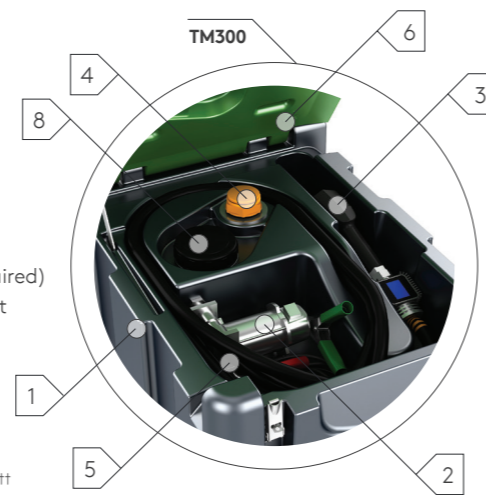
HVO Ready 	ADR Approved* 	Tank Guarantee*** 
---	--	--



	
TM200	TM300
Capacity 200 Ltrs/44 Gals	Capacity 300 Ltrs/66 Gals
Length 600 mm	Length 600 mm
Width 800 mm	Width 800 mm
Height 620 mm	Height 890 mm
Weight 33kg	Weight 45kg
	
TM430	TM900
Capacity 430 Ltrs/95 Gals	Capacity 900 Ltrs/198 Gals
Length 1180 mm	Length 1410 mm
Width 860 mm	Width 1050mm
Height 910 mm	Height 1210 mm
Weight 64kg	Weight 97kg

TM430/300 Equipment Specification

1. Tank
2. 12V Pump
3. Automatic nozzle (with optional flowmeter, if required)
4. Pressure relief vent
5. Delivery hose
6. Lockable lid***
7. Shackles†
8. 4" Inspection lid††
9. Filling offset†††
10. Internal LED Light†††
11. Gas Strut



Model Selector

All dimensions and weights are an approximate only

* 200 and 300 litre models do not require ADR approval due to their smaller capacity

** 5 year warranty applies to the tank only

*** Lid with integrated lock (TM430 and TM900). Lid with lockable latch, padlock not provided (TM200 and TM300)

† Available on TM430 and TM900 as optional extra

†† Available on TM200, TM300

††† Available on TM430 and TM900 as optional extra

FuelMaster®

Diesel Storage & Dispensing Solutions
Available from 1,200-9,000 Litres

HVO Ready 	CE marked** 	Tank Guarantee*** 
--	--	--



		
FM1200	FM1225	FM1300
Capacity* 1200 Ltrs/ 264 Gals	Capacity* 1225 Ltrs/269 Gals	Capacity* 1300 Ltrs/286 Gals
Length 1150 mm	Length 2050 mm	Length 1920 mm
Width 1200 mm	Width 900 mm	Width 1230 mm
Height 1430 mm	Height 1970 mm	Height 1785 mm
		
FM2500	FM3500	FM5000
Capacity* 2500 Ltrs/550 Gals	Capacity* 3500 Ltrs/755 Gals	Capacity* 5000 Ltrs/1100 Gals
Length 2460 mm	Length 2850 mm	Length 2850 mm
Width 1460 mm	Width 2200 mm	Width 2250 mm
Height 1950 mm	Height 1960 mm	Height 2350 mm
		
FM9000		
Capacity* 9000 Ltrs/1980 Gals		
Length 3280 mm		
Width 2480 mm		
Height 2950 mm		

Standard Features:

- Bunded Construction
- Lockable Door
- 72 lpm Pump 230v
- Digital Flowmeter (excluding FM1200 and Standard specs)
- 1" Suction Line
- Auto Shut-Off Nozzle
- 10 Micron Particle & Water Filter
- 2" BSP Coupling for Filling
- Spillstop Mechanical Overfill Protection
- Motion Sensor Light (Advanced & PRO specs only)
- Tank Level Monitoring & Management Systems Available

*Capacities may vary

**CE mark applies to the primary storage tank

***10 year warranty applies to the tank only

Boot Bath & Chemical Store

Boot Bath

Boot bath ideally used at the entrance of poultry units, piggeries and dairies etc. to disinfect, clean and decontaminate boots before entering and help the control of disease.

Manufactured in bright yellow helps the boot bath stand out so that it can be seen easily and be more readily used by visitors to the site. It also has a lid that is easily flipped open with your foot. The lid is designed to keep rainwater out and helps avoid the solution becoming diluted.



Length	510 mm
Width	485 mm
Height	250 mm

Chemical Store

The large bunded store is ideal for the storage of dry chemicals (powders) and features fully lockable lid, removable powder store and a galvanised floor.

- Lid is lockable ensuring contents are securely stored (lock not included)
- Polyethylene divider included for separating contents



CHEMICAL STORE AD96

Length	1140 mm
Width	540 mm
Height	670 mm

Rainwater Harvesting & Storage Systems

Gamma Rainwater Harvesting System



Gravity System

GRW080	GRW110	GRW160
Capacity 2350 Ltrs	Capacity 3100 Ltrs	Capacity 4600 Ltrs
Standard Overall Height 1767mm	Standard Overall Height 2257mm	Standard Overall Height 2257mm
Standard Inlet Invert* 720mm	Standard Inlet Invert* 720mm	Standard Inlet Invert* 720mm
Standard Outlet Invert* 750mm	Standard Outlet Invert* 750mm	Standard Outlet Invert* 750mm
Length 3000mm	Length 2480mm	Length 3360mm
Width 1180mm	Width 1130mm	Width 1215mm

Direct System

GRW080	GRW110	GRW160
Capacity 2350 Ltrs	Capacity 3100 Ltrs	Capacity 4600 Ltrs
Standard Overall Height 1767mm	Standard Overall Height 2257mm	Standard Overall Height 2257mm
Standard Inlet Invert* 720mm	Standard Inlet Invert* 720mm	Standard Inlet Invert* 720mm
Standard Outlet Invert* 750mm	Standard Outlet Invert* 750mm	Standard Outlet Invert* 750mm
Length 3000mm	Length 2480mm	Length 3360mm
Width 1180mm	Width 1130mm	Width 1215mm

* Includes tank neck - trimmable to suit required invert from 720mm to 220mm.

RainStore Above Ground Retrofit Rainwater Storage Systems

The free standing tanks require no specialist installation and come in sizes that will really make a difference to metered properties and areas prone to water restrictions in summer months. The RainStore Range of rotationally moulded storage tanks are tough, durable and built to last.



RSS0450	RSS0900
Capacity 5000 Ltrs	Capacity 10000 Ltrs
Diameter 2000 mm	Diameter 2630 mm
Height 2500 mm	Height 2700 mm
Outlet 2" BSP Male	Outlet 2" BSP Male

RainStore Standard Package includes:

- Tank(s)
- Integrated Leaf Filter
- Calmed Inlet
- Siphon Overflow
- Rainwater Inlet from Roof
- 2" BSP Outlet
- Mains Top Up Valve

Contact Details

UK

Kingspan Water & Energy Ltd.

180 Gilford Road

Portadown,

BT63 5LF

T: +44 (0) 28 3836 4444

E: tankinfo@kingspan.co.uk

Ireland

Kingspan Water & Energy Ltd.

Dundalk Road

Carrickmacross

Co. Monaghan

T: +353 (0) 42 969 0022 | 1890 201 690

E: tankinfo@kingspan.ie

We take every care to ensure that the information in this document is accurate at the point of publication. Dimensions may vary within a small parameter due to manufacturing process variations or environmental conditions. All images are for illustration purposes only and, along with dimensions, should not be taken as binding. The actual product may vary and aspects such as equipment specification/weight/colour may differ. To ensure you are viewing the most recent and accurate product information, please visit : <https://www.kingspan.com> ©Kingspan and the Lion Device are Registered Trademarks of the Kingspan Group in the UK, Ireland and other countries. All rights reserved. Registered in Country No.NI017631. Registered Office: 180 Gilford Road, Portadown, Co. Armagh, BT635LF. VAT GB412 5124 03

